



Pleasure and Purpose
COLLECTIVE

JUNGIAN ARCHETYPES



AN EXPLORATION OF THE INTUITIVE MOTIFS
WHICH GUIDE & INFORM YOUR JOURNEY

INTRODUCTION



Understanding the various archetypes, their motivations, and orientations can provide profound insights into different aspects of human behaviour and the complexities of the human psyche.

Each archetype brings unique strengths and weaknesses, allowing individuals to better understand themselves and others, fostering personal growth and connection.

By embracing the wisdom of the archetypes, individuals can embark on a transformative journey of self-discovery and empowerment.

This guide has been created in conjunction with the [Renasci Archetypal Exploration Quiz](#) (so complete that if you haven't already!) to help you understand your results and gain personal insight from the process.

There is no right archetype, no one you should wish to aspire to as if it's the height of the personal growth journey. In fact, each of us embodies each of these archetypes all at once - as our focus changes, so does the dominance of their impact on our lives & the lessons they can impart.

I hope you enjoy this guide - may it serve you well in your exploration of personal desire and attainment.

INNOCENT



Pleasure and Purpose
COLLECTIVE



Freedom through Safety and Security

The Innocent archetype embodies the spirit of exploration with a strong focus on safety and security. They approach life with childlike wonder and a genuine belief in the goodness of the world.

DESIRES

To experience and preserve a sense of safety, simplicity, and happiness. To explore and embrace the world with a childlike wonder.

FEARS

Feeling unsafe, vulnerable, or facing danger. Losing innocence or being deceived by others.

STRENGTHS

Optimism, purity, openness, and trust in the goodness of the world. A sense of wonder and appreciation for life's simple pleasures.

WEAKNESSES

Naivety and gullibility, easily taken advantage of. Avoidance of difficult or complex situations to maintain a sense of innocence.

APPROACH

Seeks to create and maintain a safe and harmonious environment. Sees the world through a lens of positivity and purity.

SHADOW

Denial of reality or escapism to avoid facing life's challenges. May become overly dependent on others for safety and guidance.



Pleasure and Purpose
COLLECTIVE

EXPLORER



Pleasure and Purpose
COLLECTIVE



Freedom through Exploration

The Explorer is driven by an insatiable curiosity and a thirst for adventure. They possess a free-spirited nature, constantly seeking new experiences and deeper understanding of the world around them.

DESIRES

To seek new experiences, personal growth, and freedom. To embrace adventure and discover the unknown.

FEARS

Feeling trapped, restricted, or confined. Missing out on life's possibilities and staying stuck in routine.

STRENGTHS

Curiosity, adventurous spirit, and an open mind. Courage to face the unknown and embrace change.

WEAKNESSES

Restlessness and discontentment when confined to the familiar. Tendency to avoid commitments or deep emotional connections.

APPROACH

Seeks exploration and discovery in various aspects of life. Longs for self-discovery and personal transformation.

SHADOW

Inability to commit or settle down, always seeking novelty and avoiding responsibilities. Struggles with intimacy and emotional depth.



Pleasure and Purpose
COLLECTIVE



Freedom through Understanding

The Sage is characterized by their deep wisdom, intellectual curiosity, and desire for truth. They are seekers of knowledge, always in pursuit of understanding the mysteries of life and the universe.

DESIRES

To seek truth, knowledge, and understanding.
To share wisdom and insights with others and attain the truth.

FEARS

Being misled or deceived. Losing one's intellectual capabilities or becoming actively ignorant.

STRENGTHS

Intellectual depth, wisdom, and a thirst for knowledge. A keen ability to analyse and understand complex concepts.

WEAKNESSES

Overthinking or analysis paralysis. Struggling to connect emotionally with others due to a strong focus on the intellect.

APPROACH

Seeks knowledge and understanding through study, introspection, and reflection. Shares personal insights to inspire collective growth.

SHADOW

Arrogance or a know-it-all attitude, alienating others with excessive intellectualism. Emotionally detached, over-reliant on logic.

WARRIOR



Legacy through Mastery & Triumph

The Warrior embodies strength, discipline, and determination. They are driven by a relentless pursuit of excellence and a commitment to overcoming challenges.

DESIRES

To seek challenges, achieve greatness, and emerge victorious. To protect and defend what is valued.

FEARS

Failure, weakness, or being seen as vulnerable. Losing control or being dominated by others.

STRENGTHS

Courage, determination, and strong leadership qualities. Willingness to fight for what is right.

WEAKNESSES

Tendency towards aggression or overly competitive behaviour. Difficulty in expressing vulnerability or seeking help.

APPROACH

Approaches life with a sense of purpose and a drive to overcome obstacles. Strives for excellence and takes decisive action.

SHADOW

Excessive focus on dominance and winning at all costs, leading to destructive behaviour. Struggles with vulnerability and expression.

REBEL



Legacy through Revolution

The Rebel embodies the spirit of revolution and non-conformity. They are driven by a desire to challenge the status quo and break free from societal norms.

DESIRES

To challenge the status quo, break free from constraints, and spark change. To embrace nonconformity and individuality.

FEARS

Losing personal identity or becoming assimilated into the mainstream. Being silenced or suppressed.

STRENGTHS

Independence, creativity, and the ability to inspire others to question norms. Fearlessness in the face of opposition.

WEAKNESSES

Tendency towards rebellion for its own sake, leading to chaos or self-destructive behaviour. Difficulty in forming emotional connections.

APPROACH

Approaches life with a rebellious and nonconformist attitude, challenging established norms and advocating for change.

SHADOW

Constant defiance and rejection of authority, leading to isolation and lack of cooperation. Struggles with long-term commitments.

MAGICIAN



Pleasure and Purpose
COLLECTIVE



Legacy through Transformation & Power

The Magician embodies the power of transformation and self-mastery. They are driven by a deep understanding of the mysteries of life and the forces that shape our reality.

DESIRES

To uncover the secrets of the universe, and harness personal power for transformation. To understand the hidden truths of existence.

FEARS

Being deceived or manipulated. Misusing power in a misaligned way or causing unintentional harm.

STRENGTHS

Wisdom, intuition, and the ability to see beyond the surface. Gifted in transformation and manifestation.

WEAKNESSES

Tendency towards manipulation or using knowledge for personal gain. Difficulty in relating to practical, mundane matters.

APPROACH

Approaches life with an interest in the mystical and esoteric. To understand the deeper truths of life.

SHADOW

A desire to unethically control or manipulate. Struggle with being too detached from reality and too focussed on accruing power.



Pleasure and Purpose
COLLECTIVE

EGALITARIAN



Pleasure and Purpose
COLLECTIVE



Connection through Belonging

The Egalitarian embodies a deep sense of belonging and inclusivity. They are driven by a strong desire for equality, fairness, and community.

DESIRES

To seek harmony, connection, and a sense of belonging within a community. To promote fairness and equality for all.

FEARS

Feeling excluded, rejected or without a place to call home. Witnessing injustice or inequality without the ability to change it.

STRENGTHS

Empathy, compassion, and the ability to bring people together. Champion for the underprivileged.

WEAKNESSES

Tendency to prioritize others' needs over personal desires. Difficulty in asserting individuality or pursuing personal goals.

APPROACH

Approaches life with a focus on creating a sense of belonging and fostering a supportive community. Strives for fairness and equality.

SHADOW

Struggles to assert individuality or voice personal opinions. Lack of self-expression. Struggles with setting personal boundaries.



Pleasure and Purpose
COLLECTIVE

LOVER



Connection through Intimacy

The Lover embodies the essence of intimacy and connection. They are driven by a deep desire for emotional and sensual experiences and meaningful relationships.

DESIRES

To seek intimacy, love, and emotional connection. To experience pleasure and sensory delights.

FEARS

Rejection, loneliness & isolation, loss of love, or emotional pain. Being unloved or unwanted.

STRENGTHS

Passion, emotional depth, and the ability to create meaningful connections. Appreciation for beauty and aesthetics.

WEAKNESSES

Tendency towards co-dependency or seeking validation through others. Difficulty in dealing with emotional conflicts.

APPROACH

Approaches life with a focus on building intimate relationships and emotional connection. Embraces sensuality.

SHADOW

Excessive dependence on others for validation, leading to emotional instability. May struggle with possessiveness or jealousy.

JESTER



Pleasure and Purpose
COLLECTIVE



Connection through Pleasure & Joy

The Jester embodies a playful and joyful spirit. They are driven by a desire for pleasure, spontaneity, and living life to the fullest, with a focus on pleasure.

DESIRES

To seek joy, laughter, and light-hearted experiences. To entertain and bring happiness to others.

FEARS

Feeling bored, stagnant or unfulfilled. Being misunderstood, either as overly serious or lacking depth.

STRENGTHS

Humour, spontaneity, and the ability to find joy in the present moment. Natural entertainer and bringer of laughter. Speaker of truth.

WEAKNESSES

Tendency to avoid seriousness or emotional depth. Difficulty in dealing with challenges that require a serious approach.

APPROACH

Approaches life with a light-hearted and playful attitude, seeking joy and spontaneity. Loves to entertain and bring smiles to others.

SHADOW

Using humour to mask emotions or avoid serious issues, leading to unresolved conflicts. Avoids the consequences of their actions.



Pleasure and Purpose
COLLECTIVE

SAINT



Pleasure and Purpose
COLLECTIVE



Altruism through Service & Sacrifice

The Saint embodies a deep sense of service and selflessness. They are driven by a strong desire to help others and make a positive impact on the world.

DESIRES

To seek service to others, compassion, and the well-being of all. To make a positive impact on the world.

FEARS

Being unable to help others or feeling selfish. Witnessing suffering and injustice without the ability to help or change the outcome.

STRENGTHS

Selflessness, empathy, and the ability to care deeply for others. A natural desire to serve and make a difference.

WEAKNESSES

Selflessness, empathy, and the ability to care deeply for others. A natural desire to serve and make a difference.

APPROACH

Approaches life with a focus on serving others and contributing to the greater good. Strives to alleviate suffering and promote well-being.

SHADOW

Self-sacrifice/martyrdom, leading to burnout or personal neglect. Struggle with feeling unappreciated or taken advantage of.

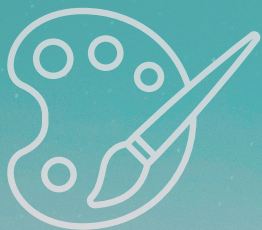


Pleasure and Purpose
COLLECTIVE

ARTIST



Pleasure and Purpose
COLLECTIVE



Altruism through Innovation/Creation

The Artist embodies a deep sense of creativity and innovation. They are driven by a strong desire to express themselves through art, music, or other forms of creative expression.

DESIRES

To seek self-expression, creativity, and the freedom to explore artistic visions. To share unique perspectives with the world.

FEARS

Creative blocks or being unable to express oneself. Feeling misunderstood or rejected for one's art.

STRENGTHS

Imagination, creativity, and the ability to see beauty in the world. Artistic talent and a desire to inspire through creativity.

WEAKNESSES

Tendency towards self-doubt or sensitivity to criticism. Difficulty in dealing with practical matters or routine tasks.

APPROACH

Approaches life with a focus on creativity, self-expression, and sharing unique artistic visions with the world.

SHADOW

Self-destructive tendencies or feelings of inadequacy. Can't balance their pursuits with the demands of daily life.



Pleasure and Purpose
COLLECTIVE

SOVEREIGN



Pleasure and Purpose
COLLECTIVE



Altruism through Control & Leadership

The Sovereign embodies a deep sense of control and leadership. They are driven by a desire to establish order and take charge of their own lives and the lives of others.

DESIRES

To seek power, control, and the ability to lead and influence others. To create order and stability.

FEARS

Losing control or authority. Being perceived as weak or ineffectual. Being overthrown, challenged, or facing rebellion.

STRENGTHS

Leadership, decisiveness, and the ability to organize and lead with authority. Natural ability to create structure and order.

WEAKNESSES

Tendency towards authoritarianism or the need to control everything. Difficulty in trusting others or delegating tasks.

APPROACH

Approaches life with a focus on asserting authority, creating order, and influencing others. Strives for control and stability.

SHADOW

Excessive control or manipulation, leading to conflicts with others. Struggles with being overly rigid or resistant to change.



Pleasure and Purpose
COLLECTIVE

AND FINALLY...



Hey Lee! What if I fit into more than one Archetype? What if I fit into none of them? What do I do then?!

I'm glad you asked! Take these 12 Archetypes as a basis for exploration in this modality. Archetypes at the top level are simply this:

Universal images which humanity understands intuitively.

You can intuitively understand what a 'magician' is, much like you can understand what a 'warrior' is. There are certain things which bend the lens through which we see Archetypes - like cultural upbringing or past experience - but they largely can be understood.

But this is only the first level. We can go deeper. Take the 'Jester' for example. Take a look at any article on this archetype and you'll find alternate names for it - the Clown, the Fool, the Comedian, the Shapeshifter, or the Trickster.

Each has a different connotation, a different intuitive understanding of what that archetype is. Within the Renasci philosophy, we like tools. Humans didn't come to life with a user's manual, so we take the approach of collecting the tools, using what works for us, and discarding the rest.

See these 12 Archetypes as a tool to create your own Archetype. Use one as a blueprint, mix two together, it's completely up to you. What is important is that it can act as a primer for understanding yourself, your desires, your strengths and fears.

In our exploration of this tool, you may have noted we have created an overarching template by which to explain each of them. This can be used in your creation of a personal archetype!

Should you create one, we'd love to see it!